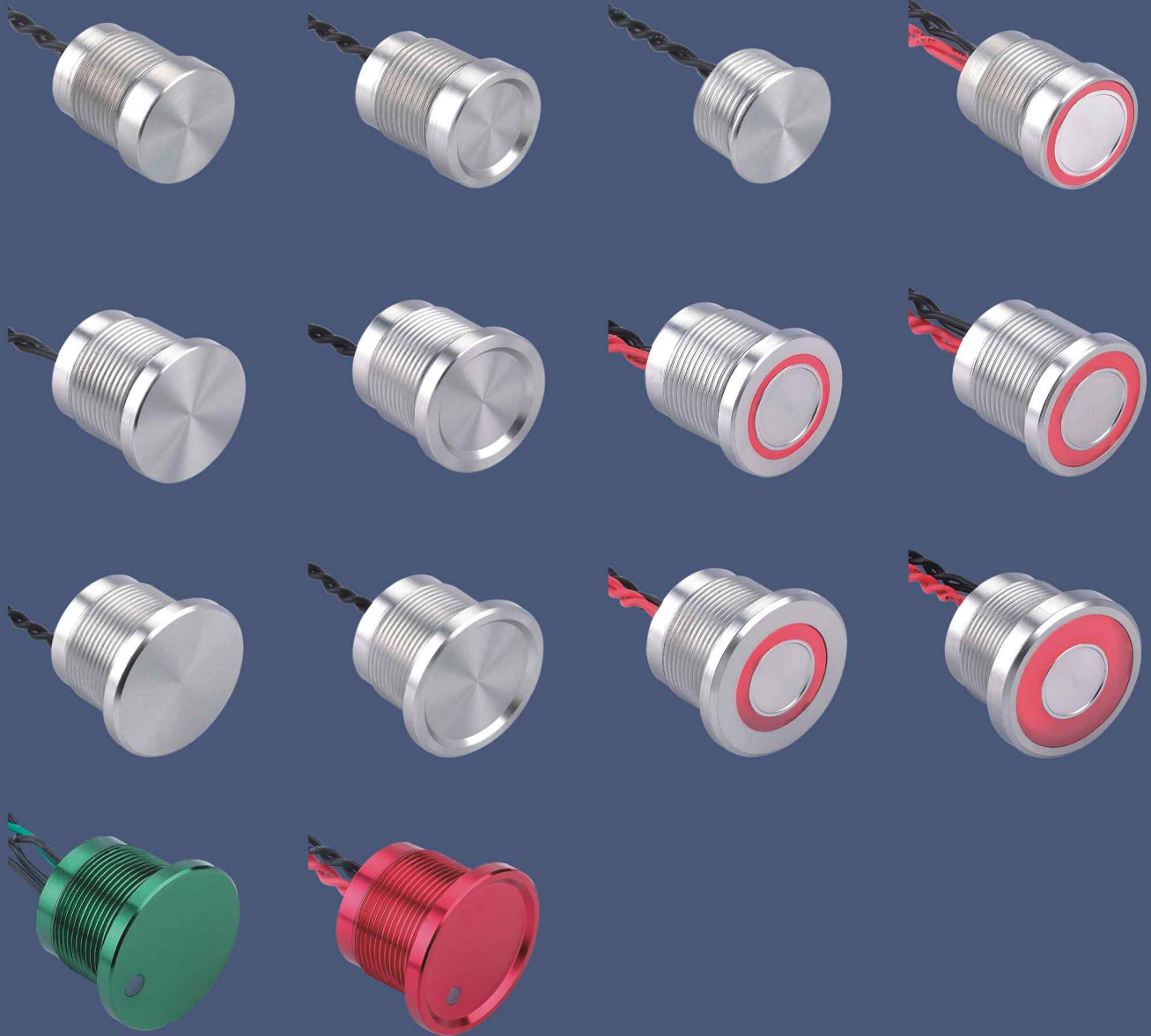


Datasheet

Item no. 649958/ 649959/ 649963/ 649962/ 649960/ 649966/
649965/ 649964

V1_0717_01_en

Piezoelectric switch



Environmental specifications

- Sealing : IP68
- Vibration resistance : 10–500 Hz / 10 g
- Operating temperature : –40°C to +75°C

Materials

- Case : aluminium, anodized
- Multi-wire leads section 0,22 mm² length 300 mm, twisted by pair
- Cable, length 300 mm, section depending on switch model
- PC terminals : bronze, tin plated

Electrical and general specifications

- Max. current/voltage rating : 1A 24VAC/DC or 200mA 24VAC/DC depending on version
- Switch resistance ON : 10 max.
- Switch resistance OFF : 5M min.
- Operating force : 2 to 6N
- Life expectancy : 50 million cycles
- LED consumption : Illuminated dot : 10mA – Illuminated ring : 20mA

Datasheet

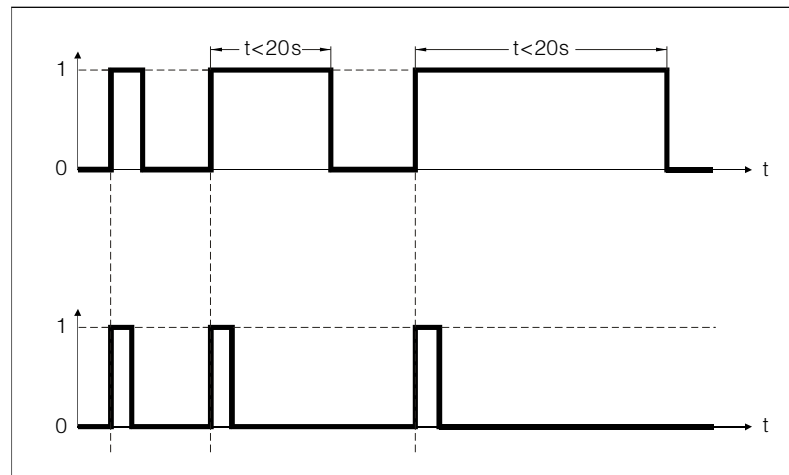
Item no. 649958/ 649959/ 649963/ 649962/ 649960/ 649966/
649965/ 649964

V1_0717_01_en

Piezoelectric switch Overview

Finger pressure applied to switch

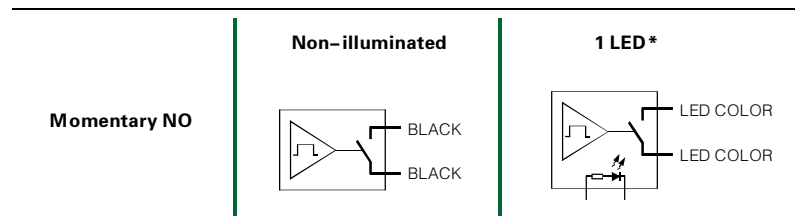
1 = pressure
0 = no pressure



Output

– Momentary NO (pulse)
No external power supply required

Wiring diagrams



Datasheet

Item no. 649958/ 649959/ 649963/ 649962/ 649960/ 649966/
649965/ 649964

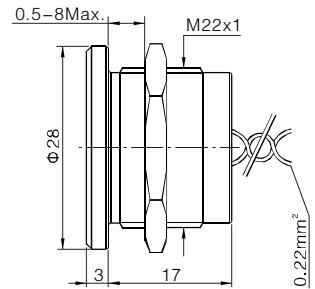
V1_0717_01_en

Piezoelectric switch $\Phi 22$ Options

Non-illuminated, operator height 3 mm, flat



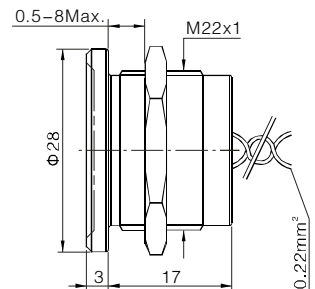
649958 : Piezo switch, flux22mm, 3.0mm flat operator, Aluminium, 200mA, 24 V AC/DC



Non-illuminated, operator height 3 mm, with finger location



649959 : Piezo switch, flux22mm, 3.0mm fringer location operator, Aluminium, 200mA, 24 V AC/DC



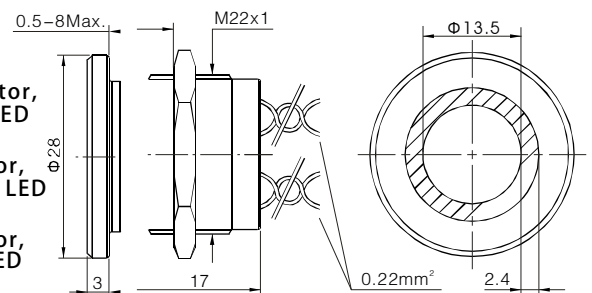
With thin illuminated ring – operator height 3 mm, flat



649963 : Piezo switch, flux22mm, 3.0mm flat operator, Aluminium, 200mA, 24 V AC/DC, thin ring w/ Blue LED

649962 : Piezo switch, flux22mm, 3.0mm flat operator, Aluminium, 200mA, 24 V AC/DC, thin ring w/ Green LED

649960 : Piezo switch, flux22mm, 3.0mm flat operator, Aluminium, 200mA, 24 V AC/DC, thin ring w/ Red LED



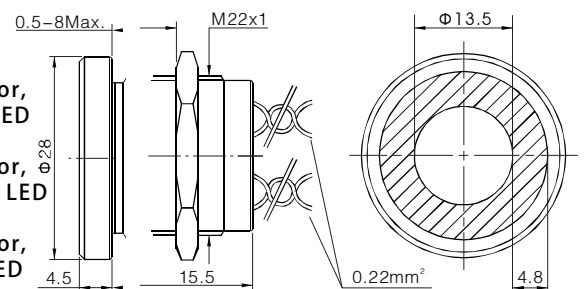
With large illuminated ring, operator height 4.5mm, flat



649966 : Piezo switch, flux22mm, 4.5mm flat operator, Aluminium, 200mA, 24 V AC/DC, large ring w/ Blue LED

649965 : Piezo switch, flux22mm, 4.5mm flat operator, Aluminium, 200mA, 24 V AC/DC, large ring w/ Green LED

649964 : Piezo switch, flux22mm, 4.5mm flat operator, Aluminium, 200mA, 24 V AC/DC, large ring w/ Red LED



Datasheet

Item no. 649958/ 649959/ 649963/ 649962/ 649960/ 649966/
649965/ 649964

V1_0717_01_en

Piezoelectric switch Specifications



Shower
(IP68 sealing)



Home automation
(design, customization)



Bath
(IP68 sealing, customization)



Car wash
(IP68 sealing, long life)



Matine
(IP68 sealing, design)



Medical
(easy to clean surface, no retention area)



Food processing
(IP68 sealing)



Mining
(IP68 sealing)

This is a publication by Conrad Electronic SE, Klaus-Conrad-Str. 1, D-92240 Hirschau (www.conrad.com).
All rights including translation reserved. Reproduction by any method, e.g. photocopy, microfilming, or the capture in electronic data processing systems require the prior written approval by the editor. Reprinting, also in part, is prohibited. This publication represents the technical status at the time of printing.

© Copyright 2017 by Conrad Electronic SE.